



DSC 300P

More Features, More Reliable

- Better CPU & sensor performance
- 3.5" capacitive touch panel
- Multi-touch (zoom in / out)
- Wi-Fi / Bluetooth module embedded
- HDMI Full HD live stream
- USB plug with lock
- Magnetic pogo touch charger
- Focus wheel



Diagnostic Set Device to Device for Telemedicine 1.

Connecting vital sign equipment via Bluetooth to collect important measurements. Packing all information and uploading to your EMR system with DSC 300P seamlessly.



3.5" Touch screen



Wi-Fi / Bluetooth
USB / SD card



Cable lock hole

Mini USB

Pogo pad for charger

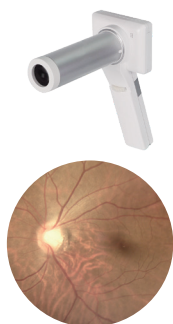
Micro HDMI

USB plug with lock

Magnetic charger

Through The Scope

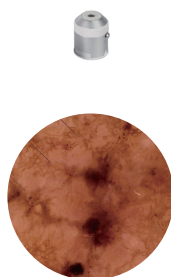
Fundus Scope



Otoscope



Dermoscope



Generalscope



Endoscope



Specification

Item			DSC 300P
Sensor			5 Megapixels (2560*1920)
Focus type			Focus wheel
LCD monitor			3.5" capacitive touch panel ; multi touch
Microphone			○
Speaker			○
File storage			Micro SD card (2 ~ 32G)
Interface	Wi - Fi		Embedded
	Bluetooth		Embedded
	Micro HDMI (1920 x 1080)		○
	Magnetic charger		○
	Mini USB		○
Function	Manual focus		○
	Auto exposure (endoscope adapter only)		○
	Auto white balance (endoscope adapter only)		○
Lens	Otoscope	DOC 300S	○
		DOC 100S	○
	Dermatoscope	DDC 200	○
		DDC 100	○
	General lens		DGC 100
	Eye fundus lens		DEC 100 / EEC 100
	Eye anterior lens	DEA 200P	○
		DEA 100 (ILS 100)	○
	Endoscope adapter		Adapter 300
Picture resolution			2560 x 1920
Video resolution			2560 x 1920
UVC resolution			640 x 480

• Information contained in this leaflet is subject to change without prior notice.



Medimaging Integrated Solution Inc.

- Tel: +886-3-5798860
- E-mail: sales@miis.com.tw
- www.miis.com.tw
- 3F, No.24-2, Industry E. RD. IV, Hsinchu Science Park, Hsinchu, Taiwan 30077, R.O.C.

